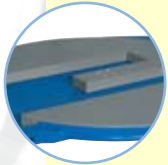


C-One BIFORIS



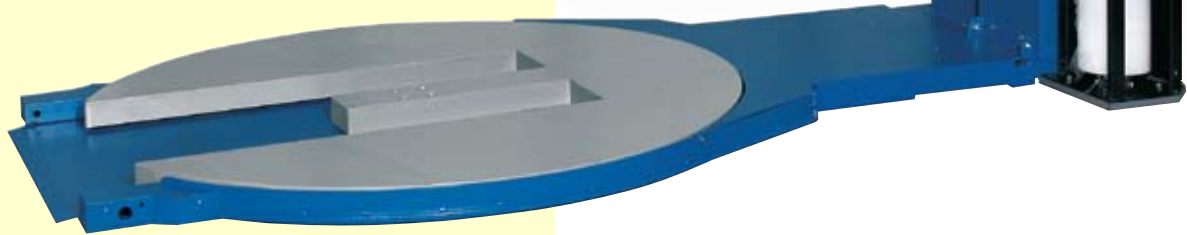
RAMP NOT NEEDED



COMPLETE SET
OF FUNCTIONS
AND OPTIONS



“SAVE YOUR TIME”
SYSTEM, WITH REMOTE
CONTROL



If you have to wrap unstable or heavy loads, maybe moved with hand pallet truck, or if extra space is needed, C-One Biforis is the right solution.

Thanks to the special shape of the turntable, it is possible to move the hand pallet truck inside the table itself.

To avoid accidental starts, a special sensor stops the turntable if the hand pallet truck is still inserted.

It is possible to choose the position of the opening for hand pallet truck: front, left or right.

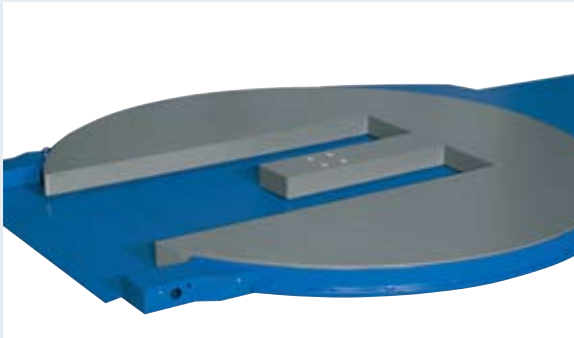
C-One Biforis has of course all the C-One series option richness. The control panel offer a wide option of parameters (more than 100) to obtain exactly the wrapping you desire.

Of course C-One Biforis works with the “rack and pinion” system, for a great safety and ruggedness: a real exclusivity of C-One machines.

Technical Data

- ↕ Height: 2468 mm.
- ↔ Width: 1650 mm.
- ↗ Length: 2454 mm.
- ↑ Turntable height from ground level: 86 mm.
- 📦 Weight: 500 kg.
- 🔌 Power Supply: 230 Vac 50Hz
- ⚡ Power absorption: 0,62 KW

Product Specifications



- Machine cycle controlled by electronic board
- Fork-shaped turntable
- Frequency controller to adjust separately the ascent and descent speed of the carriage
- Frequency controller to adjust the turntable speed
- Turntable ø.1650 mm
- Maximum pallet height: 2300 mm
- Maximum pallet dimensions 1000x1200 mm
- Maximum pallet weight 1200 kg
- Electromagnetic brake to stretch the film
- Photocell to detect the height of the pallet
- Safety stop at the bottom of the carriage
- Stop at 0 position
- IP54 control panel
- 3 Password levels
- Adjustable parameters by the control panel without password: cycle selection, number of laps (bottom and top), topsheet cycle parameters, rotation speed, carriage ascent speed, carriage descent speed, wrapping height in cm, film tension, initial wrapping height
- 5 Working cycles: ascent/descent; topsheet; only ascent; only descent; layers
- Storage of 32 user programs
- 3 Operating modes: semimanual, semiautomatic, fixed height
- Strengthening operation
- Acoustic warning at the cycle beginning and stop
- Auto diagnostic
- Wrapped pallet counter (with password)
- Full configuration possible at 3rd password level
- Infrared/radio remote control receiver
- Powder coating
- Still turntable at the end of the cycle
- 2 Years warranty

Main Options

- Electrical top-press unit for unstable loads
- Power pre-stretch carriage
- Wrapping height up to 2.8 mt
- 1800 mm diameter turntable
- Remote Control
- Black loads photocell
- Clip to fix the film directly to the turntable